

adaptaspace []

ClimatePlus 2.0 Environmental Controls



www.adaptaspace.com | 1-877-669-9942

WHERE DESIGN MEETS TECHNOLOGY



ClimatePlus is a complete Personal Environment Control System for ultimate operator comfort and flexible user control over heating, airflow, lighting and white noise.

Maximize Operator Comfort to Reduce Tension, Increase Energy and Boost Focus

ClimatePlus provides the operator touchscreen control of Dimmable Task Lights, Personal Desktop Fans Units, a Radiant or Forced Air Heating system, Work Surface and Monitor Array Height Adjustments and a White Noise Generator to keep them comfortable and attentive through their entire shift.





Control Unit:

The control unit hub has been designed to be mounted under and at the rear of the console work surface. All ClimatePlus accessories connect through this hub. Only slightly larger than a power bar, it does not interfere with knee space and integrates into the cable management system.

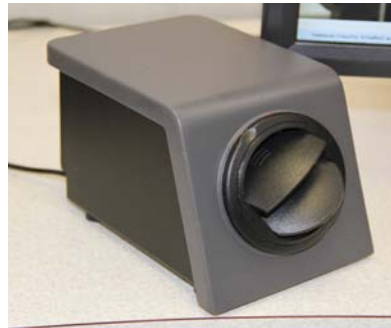


User Interface:

The ClimatePlus touchscreen interface has been designed for 24/7 applications. The unit can control task lighting for up to (2) task lights, ventilation fan speed, heat On/Off, work surface and monitor array height adjustments, white noise volume, status light and/or accent lighting. The user interface has an occupancy sensor for automatic shutoff. If user returns within 60 minutes of shutoff, the system will resume all functions at previous settings.

Diffuser Fan Units:

Balancing form and functionality, ClimatePlus fan units have been designed to be small enough to not interfere with the view of monitors. But despite their small size, the fan units provide 100 CFM of airflow with 2.5" round adjustable air diffusers and a washable filter.



Optional Items:

Adaptaspace offers a number of optional items to be utilized by the ClimatePlus user interface system including a variety of LED task lights, pole mounted status indicator lights, accent lighting, and radiant heat or forced air heating units.

An optional fan mounting bracket is also available, allowing fans to be fixed on the work surface or left freestanding for maximum flexibility.

