

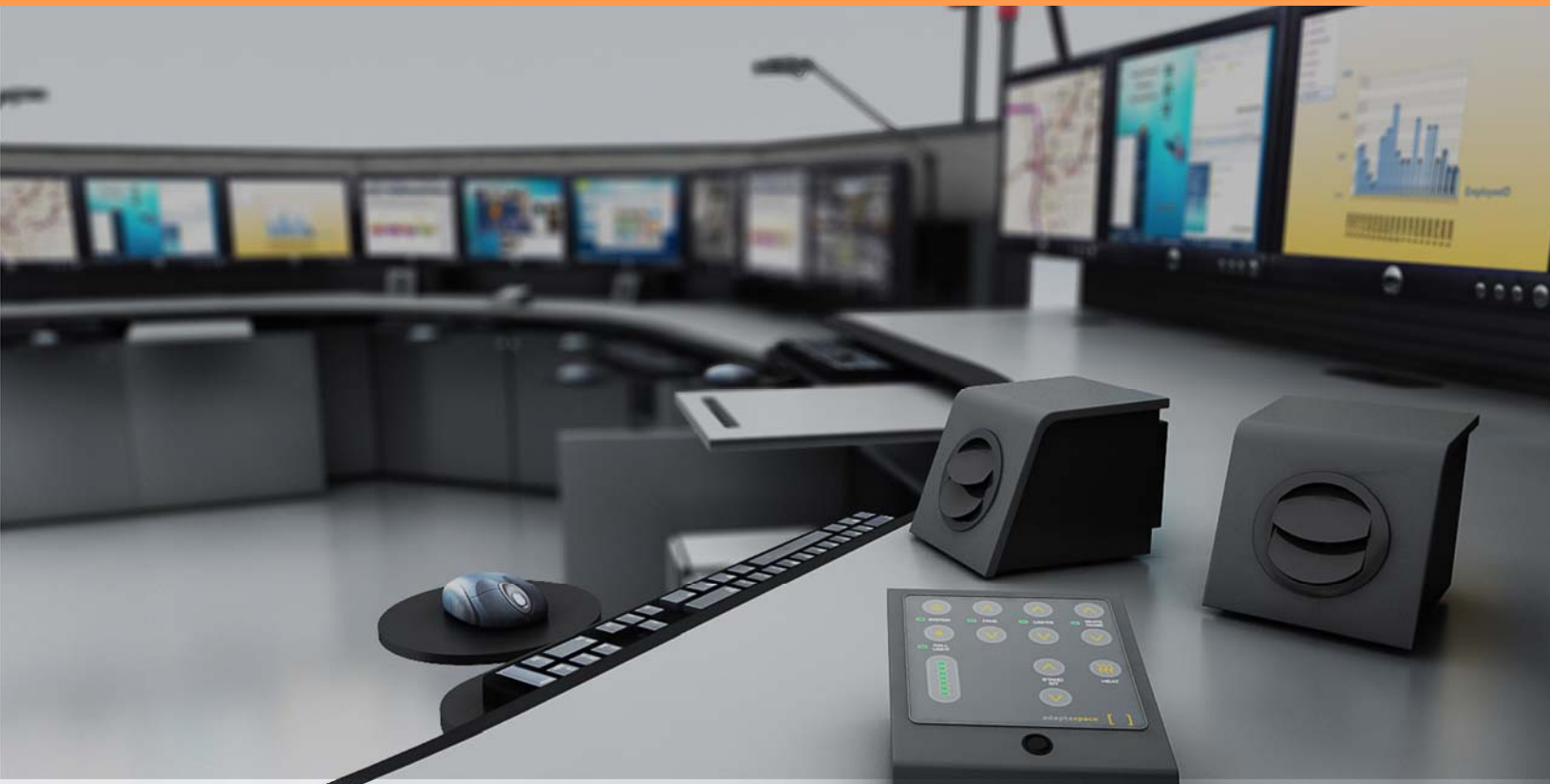
adaptaspace []

ClimatePlus Environmental Controls



www.adaptaspace.com | 1-877-669-9942

WHERE DESIGN MEETS TECHNOLOGY



ClimatePlus is a complete Personal Environment Control System for ultimate operator comfort and flexible user control over heating, airflow, lighting and white noise.

Maximize Operator Comfort to Reduce Tension, Increase Energy and Boost Focus.

ClimatePlus provides the operator single interface control of Dimmable Task Lights, Personal Desktop Fans Units, a Radiant or Forced Air Heating system, and a White Noise Generator to keep them comfortable and attentive through their entire shift.





Control Unit:

The control unit hub has been designed to be mounted under and at the rear of the console work surface. All ClimatePlus accessories connect through this hub. Only slightly larger than a power bar, it does not interfere with knee space and integrates into the cable management system.

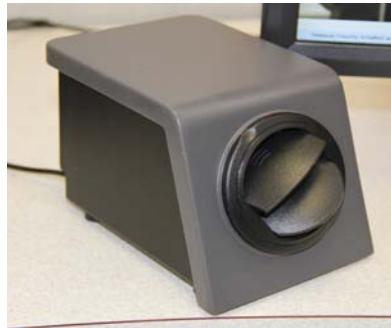


User Interface:

The ClimatePlus user interface has been designed to be durable enough to withstand 24/7 applications. The unit controls ventilation fan speed, task light dimming for up to (2) task lights, white noise volume, supervisor help light or radiant heat On/Off. The user interface has a power indicator light and an occupancy sensor for automatic shutoff. If user returns within 60 minutes of automatic shutoff, the system will resume all functions at previous settings.

Diffuser Fan Units:

Balancing form and functionality, ClimatePlus fan units have been designed to be small enough to not interfere with the view of monitors. But despite their small size, the fan units provide 100 CFM of airflow with 2.5" round adjustable air diffusers and a washable filter.



Optional Items:

Adaptaspace offers a number of optional items to be utilized by the ClimatePlus user interface system including a variety of LED task lights, pole mounted supervisor call lights, radiant heat panels and forced air heating units.

An optional fan mounting bracket is also available, allowing fans to be fixed in place on the worksurface or left freestanding for maximum flexibility.

